

Siddhartha Systematic Investment Scheme

(An open-ended equity scheme)

Scheme Objective: To deliver long-term capital appreciation through a diversified investment approach in equity securities of various market capitalizations



INVESTMENT TEAM

Mr. Nirajan Karki
Head Research & Investment
Mr. Anirudhda Pokharel
Scheme Manager



FUND DETAILS

Authorized Fund Size 1,000,000,000
Existing Fund Size 1,058,265,261
Authorized Units 100,000,000
Existing Units 89,552,081



DATE OF ALLOTMENT

Index on allotment date 3004
SSIS Allotment Date 22nd July 2021



NET ASSET VALUE

Asset Under Management Rs 1,058,265,261
NAV per unit 11.82
(As on 16th Aug 2024)



QUANTATIVE DATA

Standard Deviation:
Benchmark 25.02%
SSIS 15.60%
Fund Beta 0.64
Equity Beta 0.84



FEE INFO

Fund Management Fee 1.50%
Depository Fee 0.20%
Exit Load 1.5% within 3 years

TOP 20 EQUITY EXPOSURE

Company	% at NAV	Sector/Industry
SBI	5.8%	Commercial Banks
EBL	4.5%	Commercial Banks
NLICL	4.2%	Life Insurance
KSBBL	4.1%	Development Banks
PRIN	4.1%	Non Life Insurance
SALICO	3.7%	Non Life Insurance
CHDC	3.4%	Investment
ALICL	3.2%	Life Insurance
NIL	3.2%	Non Life Insurance
LBBL	3.1%	Development Banks
CBBL	2.7%	Microfinance
SHIVM	2.5%	Manufacturing And Processing
MKCL	2.3%	Others
SANIMA	2.3%	Commercial Banks
SPIIL	2.2%	Non Life Insurance
SHINE	2.1%	Development Banks
TAMOR	2.0%	Hydro Power
SCB	2.0%	Commercial Banks
MEN	1.9%	Hydro Power
UNL	1.6%	Manufacturing And Processing

Net Equity Exposure 77.5%

Fixed Deposit 1.9%

Bond & Debenture 4.0%

(As on 16th Aug 2024)

SECTOR WISE DETAILS

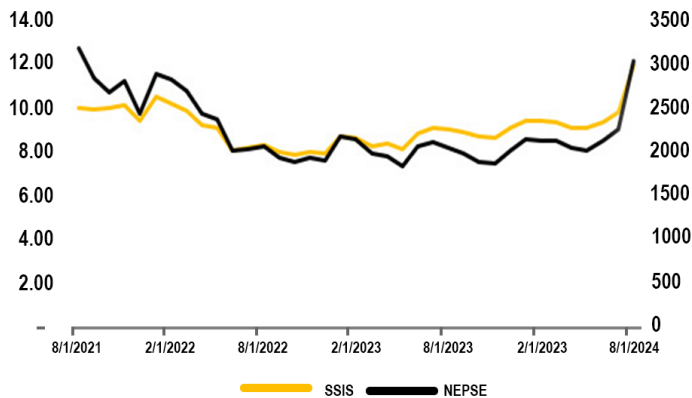
Sector	SSIS	Market
Commercial Banks	23.0%	26.5%
Development Banks	12.1%	4.6%
Finance	0.0%	2.4%
Microfinance	7.9%	10.1%
Non-Life Insurance	21.9%	5.9%
Life Insurance	13.5%	9.1%
Hotels And Tourism	0.0%	2.8%
Hydro Power	5.9%	15.1%
Others	3.7%	9.7%
Manufacturing And Processing	6.71%	6.4%
Investment	4.41%	7.3%
Mutual Fund	0.89%	0.0%

SIP PERFORMANCE

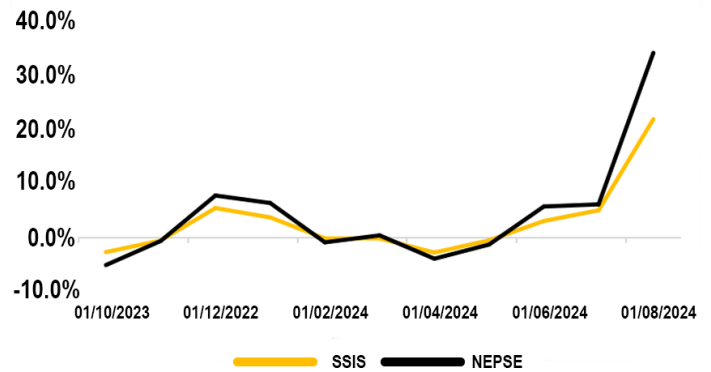
Period	SSIS	Benchmark
Since Inception	32.78%	38.48%
1 year (Trailing)	30.47%	47.88%

(Exit load has not been taken into consideration)

SSIS and NEPSE



Monthly Returns (One Year)



* The performance and benchmark have been computed from the allotment date of SSIS to the present assuming Rs 1000 invested every month as per the georgian calendar. Standard deviation is the annualized deviation of both the scheme and the market since inception of the scheme. (Past performance is not indicative of future performance and is not a guarantee of any future returns.)